

Q-SERIES

**QF(17)-FRAME
EARTH LEAKAGE**



QF17A
Dual (DIN & mini rail) mount



QF17C
Dual (DIN & mini rail) mount

PRODUCT INTRODUCTION

The QF17 type earth leakage device is available with or without overload protection as a circuit breaker and as a switch. The overload version has the suffix A and the version without overload has the suffix C.

FEATURES

- Hydraulic-magnetic technology
- 100% rating capability, independent of ambient temperature
- VDE and UL certified. VC 8035, CE, UKCA and AS/NZS 60947-2 compliant.
- Ratings 1 A to 40 A
- Earth leakage sensitivity 30 mA, Type A
- Single pole plus switched neutral earth leakage protection
- Switch versions fitted with short circuit protection
- Available in various currents ratings
- Precision tripping characteristics
- Compact 26 mm wide module
- Trip indication with mid-trip position
- Can be switched on immediately after tripping
- Suitable to use for electrical isolation
- Shell designed for easier installation onto busbar

APPLICATIONS

- Residential and commercial applications requiring high sensitivity earth leakage protection from electrical shock and fire hazards
- Earth leakage protection (DIN/EN 60947-2, Annexure B and Annexure L)
- Telecom/datacom equipment
- Lighting control
- UPS equipment
- Alternative energy equipment
- Mobile power generation equipment
- Railway signalling equipment
- Industrial equipment

**AUXILIARY SWITCH, TRIP ALARM & COMBO:
FEATURES**

- Factory fitted
- Attached to right hand side of circuit breaker
- Compact 6.5 mm width
- Auxiliary switch
- Auxiliary switch + trip alarm
- Trip alarm
- AC and DC voltages
- UL 489 (Auxiliary switch: 6 A 240 Vac, 0.5 A 110 Vdc)
- IEC 60947-5-1 approved (Auxiliary switch: 6 A 240 Vac, 0.5 A 110 Vdc; trip alarm: 6 A 240 Vac, 0.5 A 110 Vdc)

OPTIONAL ACCESSORIES

- Rear studs (factory fitted)
- Handle lock - QFAP001
- Surface mounting clips - SAAX000
- Escutcheon blank - SFEB000
- Safety blank - SAEB000

APPROVALS



AS/NZS 60947-2



TECHNICAL DATA

ELECTRICAL	
Dielectric Strength	1 480 V (Single pole) / 1 830 V (multi pole), 50 Hz for one minute after testing
Rated Impulse Withstand Voltage	4 kV (IEC 60947-2 Clause 8.3.3.2)
Time Delay Curves	2

MECHANICAL	
Endurance	10 000 operations; 1 500 with current, 8 500 without current (IEC 60947-2, clause 7.2.4.2)*

ENVIRONMENTAL	
Operating Temperature Range	-40°C to +85°C
Altitude	Certification tests done at altitude ≈ 2 000 metres. Will operate at higher altitudes.
Shock	10 G (IEC 60068-2-27)
Vibration	2 G (IEC 60068-2-6) (sinusoidal wave)
Flammability	I3 - Ignition does not persist at 850°C after glow wire is withdrawn with an oxygen index of ≥ 28
Toxicity	F1 - Smoke index of ≤ 20 which determines the fume class
Pollution Degree	PD2 - Normally only non-conductive pollution occurs. Temporary conductivity caused by condensation is to be expected.

PHYSICAL	
Mounting Options	Dual (DIN & mini rail) mount, surface mount
Number of poles	2 (1+N)
Weight	264 g - QF17C, 265 g - QF17A (unpacked)
Standard Colours	Shell - black (dual) Handle - green, or white and green

* Refer to the standard for details

Earth Leakage	Wire Size mm ² (IEC)	Torque (IEC)	Comments
Main Terminals	0.75 - 25 mm ²	2.5 N.m	Pozi #2 Combi head

Auxiliary Module	
Auxiliary Switch	DIN and CBi mini rail mounted
Trip Alarm	CBi mini rail mount only
Auxiliary Switch + Trip Alarm	CBi mini rail mount only

TECHNICAL DATA

Approvals	AS/NZS 60947-2, DIN/EN 60947-2, CE, UKCA	
Product Type	QF17A	QF17C
Number of Poles	2 (1+N)	2 (1+N)
Standard Ampere Ratings	5 to 40 A	40 A
Sensitivity	30 mA	30 mA
Rated Voltage	240 Vac	240 Vac
Rated S/C Withstand Capacity (Icw)	-	6 kA
Ultimate S/C Breaking Capacity (Icu)	6 kA	-

Approvals	UL 1053	
Product Type	QF17A	QF17C
Number of Poles	2 (1+N)	2 (1+N)
Standard Ampere Ratings	1 to 40 A	40 A
Sensitivity	22 mA	22 mA
Rated Voltage	240 Vac	240 Vac

Verify approvals for specific ratings in accordance with the relevant test certificates.

LONG CODE

Example Code: Q-F-17-A--DM-C2-40 A-30mA-240V----

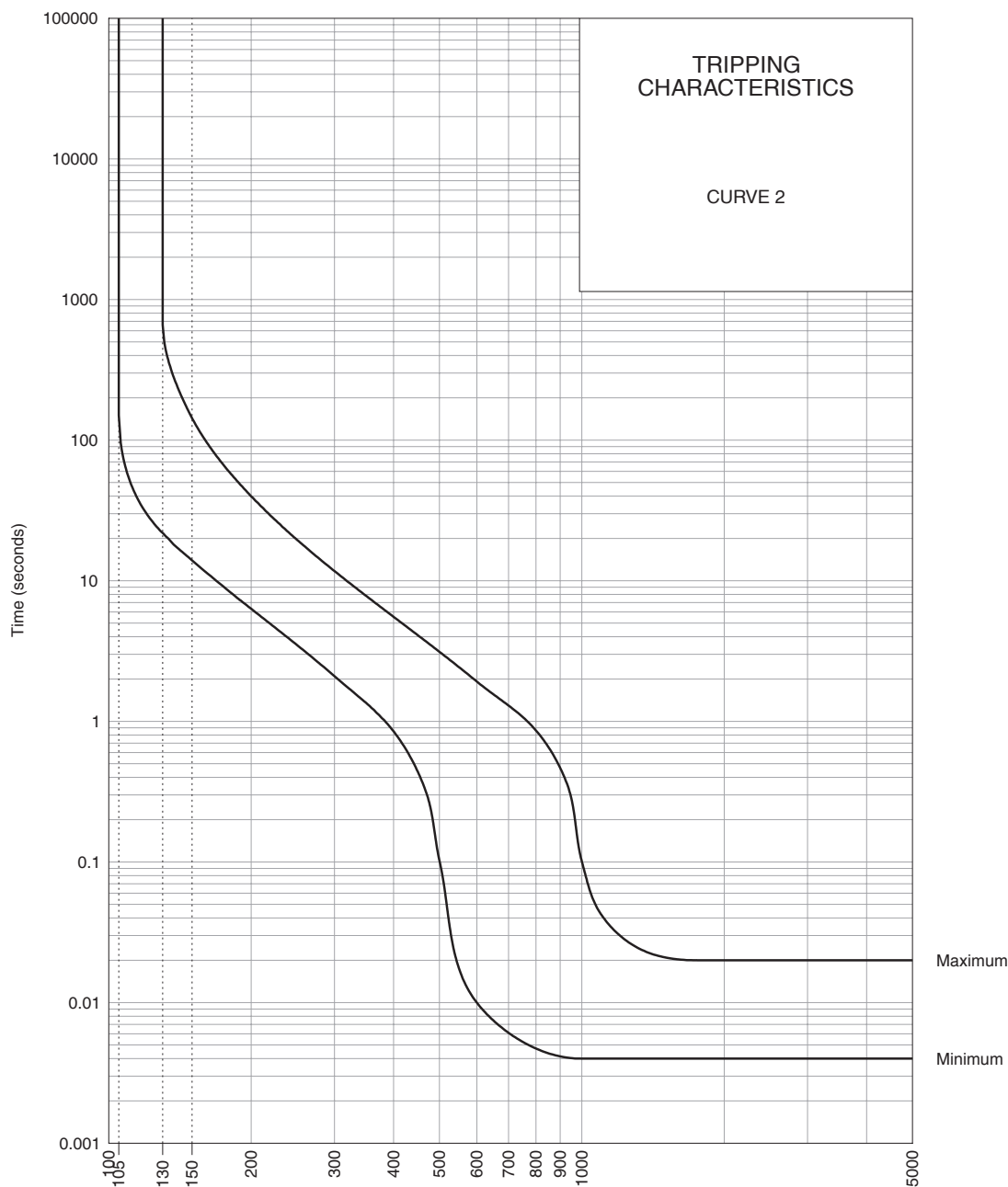
Group	1	2	3	4	5	6	7	8	9	10	11	12	13
Requirement	Q Frame	Type F	1 pole + N	Overload	No auxiliary switch	Dual mount	Medium delay curve 2	Current rating 40 A	Sensitivity 30 mA	Voltage 240 Vac	No special termination	Future use	Customer specific
Long Code	Q	F	17	A	-	DM	C2	40 A	30mA	240V	-	-	-

ORDERING INFORMATION

Group 1: Frame Type	Code	Description	Comments
	Q	26 mm wide earth leakage	
Group 2: Product Type	Code	Description	Comments
	F	6 kA	
Group 3: No of Poles	Code	Description	Comments
	17	1 Pole plus neutral earth leakage unit (1+N)	
Group 4: E-L Type	Code	Description	Comments
	A	Overload	White and green handle
	C	Switch disconnecter	Green handle
Group 5: Auxiliary / Additional Pole	Code	Description	Comments
	-	Not applicable	Use this code if no auxiliary used
	A	Auxiliary switch (1 x auxiliary in 1 module)	6.5 mm module fitted on right-hand side
	T	Trip alarm (1 x trip alarm in 1 module)	6.5 mm module fitted on right-hand side
Group 6: Mounting	Code	Description	Comments
	DM	Dual (DIN & mini rail) mount	Dual mount supplied in black shell only - 57 mm escutcheon
Group 7: Time Delays	Code	Description	Instantaneous Trip Point (x In) Comments
	-	-	- Time delays not applicable for the switch
Group 8: Current Ratings	Code / Description	Comments	
	1, 5, 10, 15, 16, 20, 25, 30, 32, 40 A	QF17A	
	40 A	QF17C	
Group 9: Sensitivity	Code	Description	Comments
	30mA	30 mA	Standard
Group 10: Voltage	Code	Description	Comments
	240 V	240 Vac	
Group 11: Special Termination	Code	Description	Comments
	-	-	Box terminals (standard)
	R	Reverse Mounting	Upside down printing
	SR	Rear Connected Stud & Reverse Mounting	Upside down printing
Group 12:	Code	Description	Comments
	-	For future use (-)	
Group 13: Customer Specific	Code	Description	Comments
	-	Not applicable	For future use

For options not listed, please contact CBI

TIME DELAY CURVES



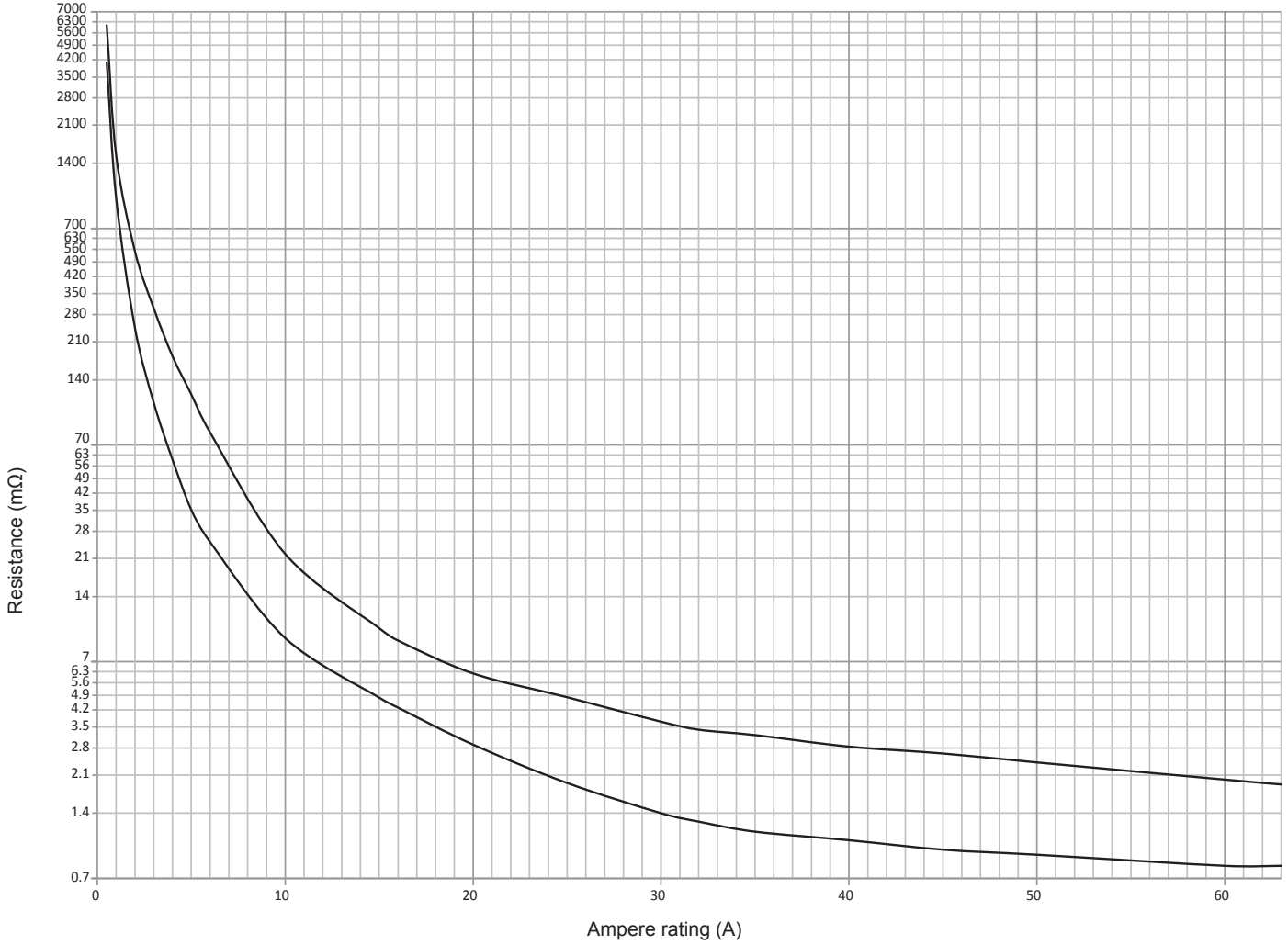
Percentage of rated current

3990306
REV H

PERCENTAGE OF RATED CURRENT	105%	130%	145%	150%	200%	300%	400%	500%	600%	700%	800%	900%	1000%	2000%
MINIMUM TRIP TIME IN SECONDS	NO TRIP	22	15.4	14	6.3	2.1	0.85	0.1	0.001	0.006	0.005	0.041	0.004	0.004
MAXIMUM TRIP TIME IN SECONDS	NO TRIP	660	180	144	40	12	5.5	3	1.92	1.3	0.86	0.47	0.1	0.02

* The published time delay curves are generated at 30 °C ambient temperature with the circuit breaker mounted in the up-right position. The “must hold”, “must trip” and “instantaneous trip” current values are not affected by temperature, although delay time for the other operating current values may have to be adjusted using the temperature compensation curve which is available on request.

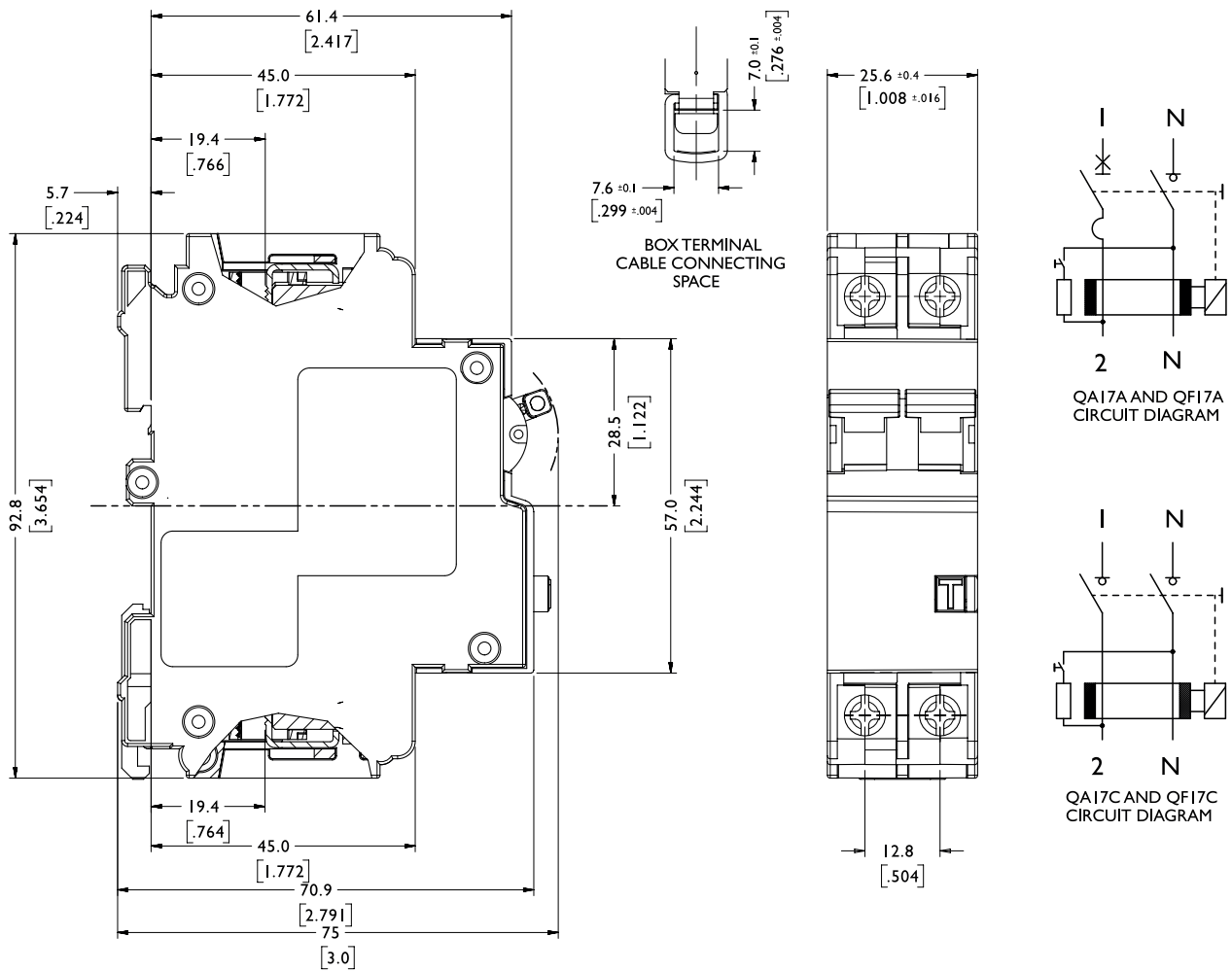
RESISTANCE CURVE



3990A784 REV A

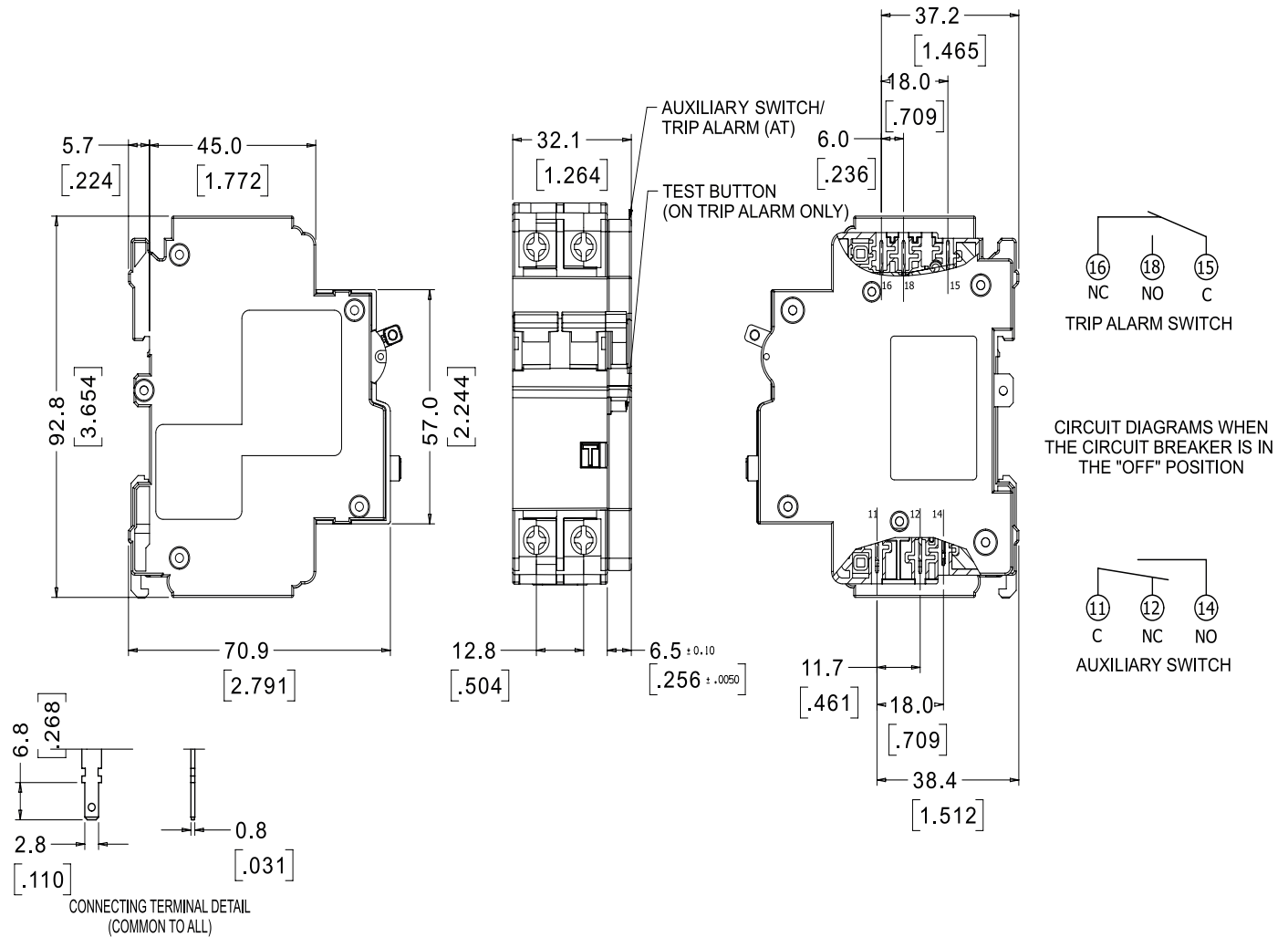
Amp RATING	0.5	1	2	5	6	10	15	20	25	30	32	40	50	60	63
MINIMUM (mΩ)	4085	970	244	35	25	9.0	4.8	2.9	1.9	1.4	1.3	1.1	0.9	0.8	0.8
MAXIMUM (mΩ)	6065	1527	550	120	80	22	10	6.2	4.8	3.7	3.4	2.8	2.4	2.0	1.9

OUTLINE DIMENSIONS: DUAL (DIN & MINI RAIL) MOUNT



TOLERANCE ±0.4 UNLESS OTHERWISE SPECIFIED
(DIMENSION IN BRACKETS ARE IN INCH)

OUTLINE DIMENSIONS: DUAL MOUNT AND AUXILIARY SWITCH



Please review our Customer Terms and Conditions on www.cbi-lowvoltage.co.za

All rights reserved. Unless otherwise indicated, all materials on these pages are copyrighted by CBI (Pty) Ltd. No part of these pages, either text or image may be used for any purpose other than personal use. Therefore, reproduction, modification, storage in a retrieval system or retransmission, in any form or by any means, electronic, mechanical or otherwise, for reasons other than personal use, is strictly prohibited without prior written permission. CBI (Pty) Ltd reserves the right to alter any details of this document without notice and while every effort is made to ensure the accuracy of the content, no warranty is given as to accuracy of this document and no responsibility will be accepted for error or misinterpretation and any resulting loss.

AUSTRALIA

CBI-electric: Australia
 33 Bazalgette Crescent, Dandenong
 South, VIC., 3175, Australia
 Tel: +1800 770 870
 Email: sales@cbi-electric.com.au
 Website: www.cbi-electric.com.au

SOUTH AFRICA

CBI-electric: low voltage
 Tripswitch Drive Elandsfontein
 Gauteng South Africa
 Tel: +27 11 928 2000
 Fax: + 27 11 392 2354
 Email: cbi@cbi-electric.com
internationalsales@cbi-electric.com
 Website: www.cbi-lowvoltage.com

USA

CBI-electric: North America
 600 Eagleview Blvd Suite 300
 Exton PA 19341 USA
 Tel: +1 610 524 9949
 Fax: +1 610 524 9945
 E-mail: info@cbibreakers.com
 Website: www.cbibreakers.com