

## T-Frame - Series Circuit Breakers



The T-Frame is a compact, low profile circuit breaker. It is available in single and double pole configurations and its low profile design makes it ideal for power distribution applications. The T-Frame has the rocker handle configuration and is available in both AC and DC.

### Features

- AC and DC circuit breaker
- Hydraulic-magnetic technology
- 100% rating capability independent of ambient temperature
- Up to two poles
- VDE approved, CE certified
- UL Listed
- Ratings 0.1 A to 30 A (specific certifications)
- Precision tripping characteristics
- Wide range of time delays
- Two colour handle indication (two tone flush rocker)

### Applications

- AC and DC branch circuit installations
- Power conditioning
- Telecom power distribution
- Alternative energy equipment
- UPS equipment
- Lighting control
- Mobile power generation equipment

### Approvals

The T-Frame circuit breaker carries various approvals such as DIN/EN 60947-2, GB 14048.2, VDE, cURus and is CE certified. It is also recognised and listed to UL 489.



**Hydraulic-Magnetic Circuit Breakers 100% rated, unaffected by ambient temperature**

## T-Frame - Series Circuit Breakers

### Technical Data

Product Type	T-Frame
Ambient Operating Temperature	-40°C to +85°C
Mounting Options	Front mounting, rectangular aperture and flush rocker handle type
Endurance	10 000 operations; 1 500 with current, 8 500 without current (IEC 60947-2 Clause 7.2.4.2)* 10 000 operations; 6 000 with current, 4 000 without current (UL 489 Clause 7.1.5)*
Dielectric Strength	1 000 - 2 000 Vac for one minute (IEC 60947-2 Clause 8.3.3.3)* 1 000 Vac plus twice the rated voltage for one minute (UL 489 Clause 7.1.9)*
Rated Impulse Withstand Voltage	4 kV (IEC 60947-2 Clause 8.3.3.2)*
Weight	90 g per pole (unpacked)
Altitude	Certification tests done at altitude ≈ 2 000 metres. Will operate at higher altitudes.
Flammability	I3 - Ignition does not persist at 850°C after glow wire is withdrawn with an oxygen index of ≥ 28
Toxicity	F1 - Smoke index of ≤ 20 which determines the fume class
Pollution Degree	PD2 - Normally only non-conductive pollution occurs. Temporary conductivity caused by condensation is to be expected.

Product Type	Circuit Breaker		Circuit Breaker	
Approvals	UL 489			
Number of Poles	1		2	
Maximum Voltages	240 Vac, 80 Vdc	120 Vac	120/240 Vac, 240 Vac, 80 Vdc	120/240 Vac
Current Ratings	0.1 A - 30 A	0.1 A - 20 A	0.1 A - 30 A	0.1 A - 20 A
AIC	10 kA	22 kA	10 kA	22 kA

Product Type	Circuit Breaker		Circuit Breaker	
Approvals	IEC 60947-2, GB/T 14048.2, CE, UKCA			
Number of Poles	1		2	
Maximum Voltages	240 Vac, 80 Vdc			
Current Ratings	0.1 A - 30 A		0.1 A - 30 A	
Icu	5 kA			

Verify approvals for specific ratings in accordance with the relevant test certificate.

### Torque Table

Description	Size	Torque Value
Front Inserts	M3	0.5 - 0.8 N.m
	6 - 32	5 - 7 lbf.in
Rear Screw	M5	1.7 - 2.3 N.m
	10 - 32	15 - 20 lbf.in
Quick Connect	M3	0.8 - 1.0 N.m

### Ordering Information

Group 1: Frame	Code	Description	Comments
	T	T-Frame	
Group 2: Type	Code	Description	Comments
	2	Standard	
Group 3: Mounting	Code	Description	Comments
	M	Front mount, rectangular aperture, 44 mm space between front inserts	Maximum penetration depth into the mounting screw is 5.4 mm, 0.21 inch
	S	Front mount, rectangular aperture, 42.2 mm space between front inserts	Maximum penetration depth into the mounting screw is 5.4 mm, 0.21 inch similar to DD-Frame
Group 4: Handle Type or Blank for Multipoles	Code	Description	Comments
	H	Flush Rocker Handle, One Colour	
	M	Flush Rocker Handle - Two Tone	
	Q	Flush rocker handle, Push-to-Reset; Use Test button to switch OFF. One Colour.	PTR HANDLE - Select Test button in Group 19 Code 2
	R	Flush rocker handle, Push-to-Reset - Two Tone; use Test button to switch OFF.	PTR HDL TT - Select Test button in Group 19 Code 2
	W	Blank Front Plate (no handle)	

## T-Frame - Series Circuit Breakers

### Ordering Information Continues

Group 5: Termination	Code	Description		Comments	
	4X	M5 or 10 - 32 screw terminals		30 A Max	
	5X	Double Quick Connect Terminal (0.8 mm x 6.35 mm)		20 A Maximum @ Vac, 2 poles	
	6X	Box Terminal		30 A Maximum, first pole, group 4 (W) no handle In group 3 code M	
Group 6: Number of Poles	Code	Description		Comments	
	1	Single pole - METRIC			
	2	Double pole - METRIC			
	A	Single pole - IMPERIAL			
	B	Double pole - IMPERIAL			
Group 7: Rated Voltages and Frequency - Main Circuit	Code	Description		Comments	
	J	120, 240 Vac (UL 489 & IEC 60947-2), 277 Vac (UL 1077) (Single pole)		Single pole products	
	N	80 Vdc		Single and double pole products	
	S	120/240 Vac (UL 489 & IEC 60947-2), 277 / 480 Vac (UL 1077) (Double pole)		Double pole products	
Group 8: Time Delay Characteristics (Curves Details); Pulse Tolerance at 10 ms	Code	Description	System	Pulse Tolerance (X In)	Comments
	AD	Long delay 50/60 Hz AS & dual rated	AC and DC	8 - 10	
	BD	Medium delay 50/60 Hz BS & dual rated	AC and DC	8 - 10	
	CD	Short delay 50/60 Hz CS & dual rated	AC and DC	6 - 8	
	AH	Long delay 50/60 Hz AS & high inrush	AC	16 - 20	
	BH	Medium delay 50/60 Hz BS & high inrush	AC	16 - 20	
	CH	Short delay 50/60 Hz CS & high inrush	AC	12 - 15	
	AS	Long delay 50/60 Hz	AC or DC	8 - 10	
	BS	Medium delay 50/60 Hz	AC or DC	8 - 10	
	CS	Short delay 50/60 Hz	AC or DC	6 - 8	
	H3	Short delay	DC	6 - 8	
	OP	Instantaneous trip 50/60 Hz	AC or DC	None	
	Group 9: Rated Current (Main Circuit) Examples only - Specific A Rating Possible	Code	Description		Comments
100M		100 mA		Specific A rating possible from 0.1 A – 30 A	
0100		1 A			
3000		30 A			
Group 10: Circuit Configuration (Circuit Breaker's Internal Construction)	Code	Description		Comments	
	BX	Circuit breaker (series trip, current coil in series)			
Group 11: Auxiliary and Alarm Switches	Code	Description		Comments	
	X	Not applicable		No auxiliary switch – flat base plate	
Group 12: Voltage and Current Ratings for Dual Control, Shunt and Relay Trip Construction	Code	Description		Comments	
	XX	Not applicable			
Group 13: Terminal Options for Dual Control, Shunt and Relay Coils	Code	Description		Comments	
	X	Not applicable			
Group 14: kA Rating	Code	Description		Comments	
	A	22 kA			
	X	Standard kA rating as per certification			
Group 15: Customer Specific	Code	Description		Comments	
	V	V - customer specific			
	X	Not applicable			
Group 16: Handle Colour	Code	Description		Comments	
	B	BLACK HANDLE, WHITE MARKING.		Black Colour Not available on the Two Tone Flush Rocker	
	G	GREEN HANDLE, WHITE MARKING (Used with Code H or Q on group 4) OR BLACK HANDLE, GREEN INDICATOR AND MARKING (Used with Code M or R ON group 4 - Two Tone)		Refer to Group 4	
	R	RED HANDLE, WHITE MARKING (Used with Code H or Q on group 4) OR BLACK HANDLE, RED INDICATOR AND MARKING (Used with Code M or R ON group 4 - Two Tone)		Refer to Group 4	
	W	WHITE HANDLE, BLACK MARKING (Used with Code H or Q on group 4) OR BLACK HANDLE, WHITE INDICATOR AND MARKING (Used with Code M or R ON group 4 - Two Tone)		Refer to Group 4	
	X	Not applicable			
	Y	YELLOW HANDLE, WHITE MARKING (Used with Code H or Q on group 4) OR BLACK HANDLE, YELLOW INDICATOR AND MARKING (Used with Code M or R ON group 4 - Two Tone)		Refer to Group 4	

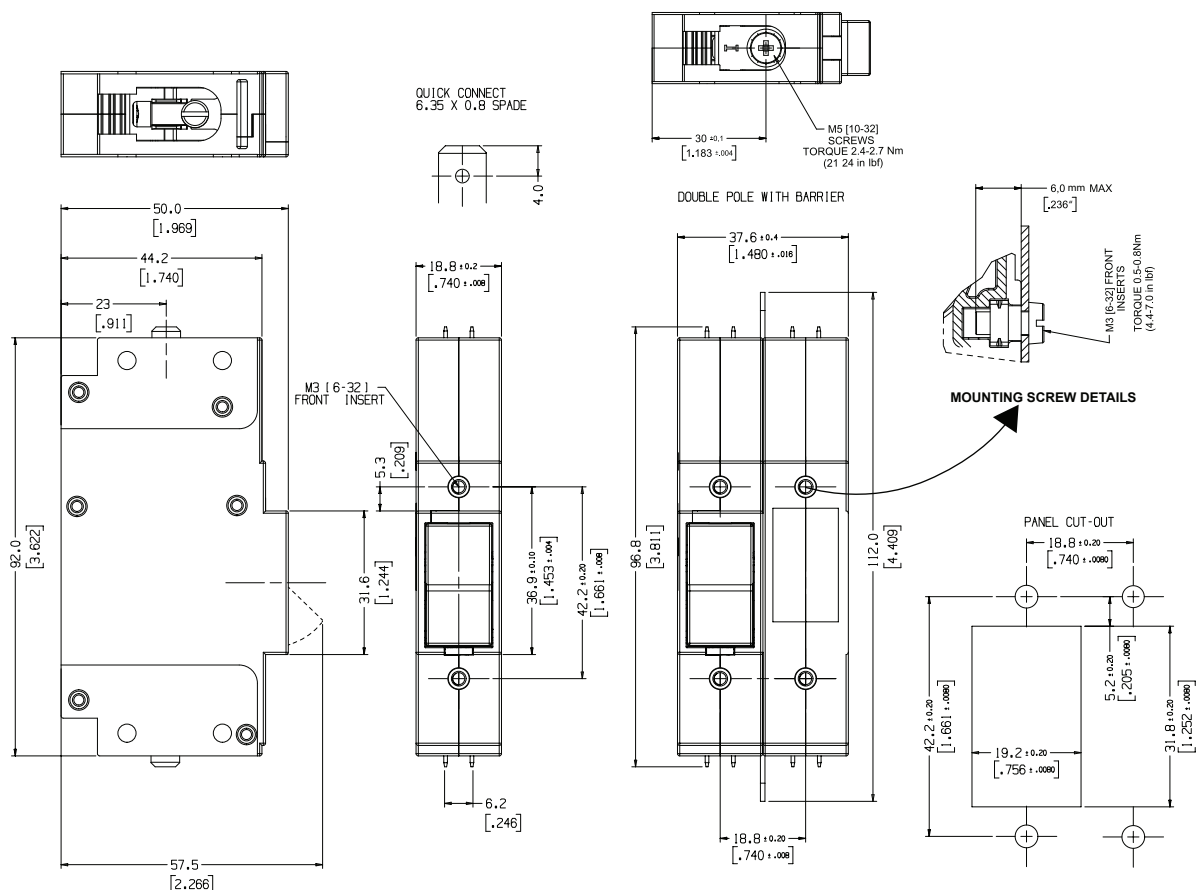
## T-Frame - Series Circuit Breakers

### Ordering Information Continues

Group 17: Handle Markings	Code	Description	Comments
	H	I - O / ON - OFF and AMP RATING	
	I	ON - I marked on Functional handle, PUSH-TO-RESET and AMP RATING marked on non-functional handle	
	X	Not applicable	
Group 18: Mounting Orientation for Marking	Code	Description	Comments
	1	Breaker mounted in Vertical Axis with LINE at the BOTTOM, marking reads left to right - normal horizontal	
	2	Breaker mounted in Horizontal Axis with LINE at the RIGHT HAND SIDE, marking reads left to right - normal horizontal	
	H	Breaker mounted in Horizontal Axis with LINE at the LEFT HAND SIDE, marking reads left to right - normal horizontal	
	V	Breaker mounted in Vertical Axis with LINE at the TOP, marking reads left to right - normal horizontal	
	X	Not applicable	
Group 19: Front Plate Marking and Test Button	Code	Description	Comments
	2	Black Front Plate, No Marking, Rocker Handle, Test Button	Applicable to Rocker handle, Use with Group 4, Codes H, M, Q and R
	B	Black Front Plate NO Marking	
Group 20: Inter-phase Barrier and Terminal Cover	Code	Description	Comments
	E	Inter-phase barrier - Z Type	Inter-phase barrier to be used with the Double Quick Connect Terminal
	X	Not applicable	
Group 21: Approvals (Product Normally Approved to)	Code	Description	Comments
	1	UL recognised UL 1077, CUR, IEC/EN 60934, CE, UKCA	Verify Certification on physical certificates - attached
	2	UL listed UL 489, CUL, IEC/EN 60947-2, CE, UKCA	UL 489, IEC 60947-2 @ 240/415 V. Verify Certification on physical certificates - attached
	Z	No approvals	
Group 22: Safety Marks	Code	Description	Comments
	C	CCC (GB 14048.2)	GB 14048.2
	X	Not applicable	

*For options not listed, please contact CBI*

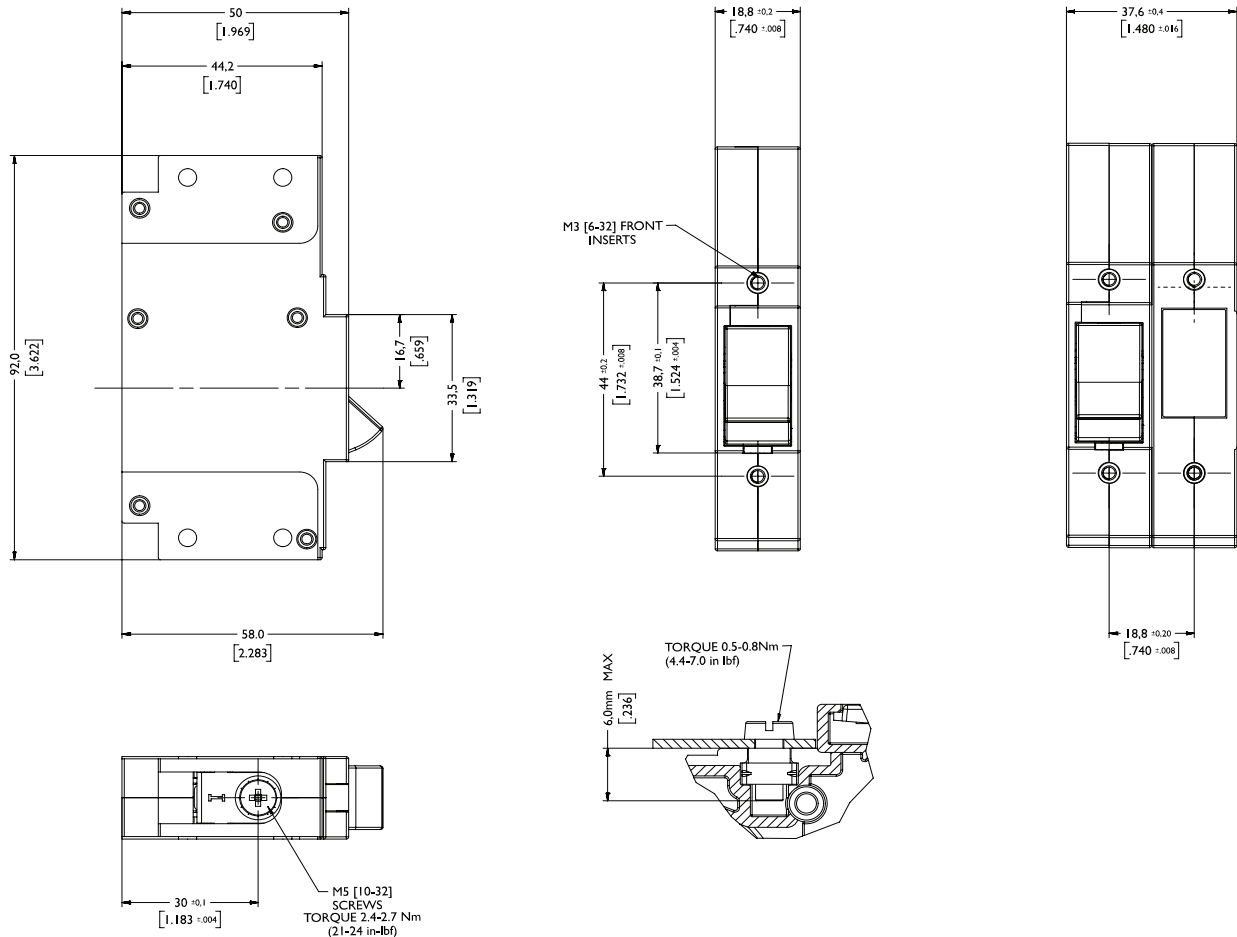
T-Frame 42.2 mm space between front insets



## T-Frame - Series Circuit Breakers

### T-Frame: Outline Dimensions

T-Frame 44 mm space between front insets



Please review our Customer Terms and Conditions on [www.cbi-lowvoltage.co.za](http://www.cbi-lowvoltage.co.za)

All rights reserved. Unless otherwise indicated, all materials on these pages are copyrighted by CBI (Pty) Ltd. No part of these pages, either text or image may be used for any purpose other than personal use. Therefore, reproduction, modification, storage in a retrieval system or retransmission, in any form or by any means, electronic, mechanical or otherwise, for reasons other than personal use, is strictly prohibited without prior written permission. CBI (Pty) Ltd reserves the right to alter any details of this document without notice and while every effort is made to ensure the accuracy of the content, no warranty is given as to the accuracy of this document and no responsibility will be accepted for error or misinterpretation and any resulting loss.

© CBI (Pty) Ltd. All Rights Reserved.

#### AUSTRALIA

**CBi-electric: Australia**  
27 Wedgewood Rd, Hallam  
Victoria 3803 Australia  
Tel: +61 3 8752 9300  
Fax: +61 3 9796 5407  
Email: [sales@cbi-electric.com.au](mailto:sales@cbi-electric.com.au)  
Website: [www.cbi-electric.com.au](http://www.cbi-electric.com.au)

#### INDIA

**CBi-electric: Asia**  
27/A, Nitesh Rio, Adjacent to Vakil  
Garden, Thalaghattapura, Kanakapura  
Road, Bengaluru, 560109, India  
Tel: +91-9880553153  
Email: [salesasia@cbi-electric.com](mailto:salesasia@cbi-electric.com)  
Website: [www.cbibreakers.com](http://www.cbibreakers.com)  
Website: [www.cbi-lowvoltage.com](http://www.cbi-lowvoltage.com)

#### SOUTH AFRICA

**CBi-electric: low voltage**  
Tripswitch Drive Elandsfontein  
Gauteng South Africa  
Tel: +27 11 928 2000  
Fax: +27 11 392 2354  
Email: [cbi@cbi-electric.com](mailto:cbi@cbi-electric.com)  
[internationalsales@cbi-electric.com](mailto:internationalsales@cbi-electric.com)  
Website: [www.cbi-lowvoltage.com](http://www.cbi-lowvoltage.com)

#### USA

**CBi-electric: North America**  
600 Eagleview Blvd Suite 300  
Exton PA 19341 USA  
Tel: +1 610 524 9949  
Fax: +1 610 524 9945  
E-mail: [info@cbibreakers.com](mailto:info@cbibreakers.com)  
Website: [www.cbibreakers.com](http://www.cbibreakers.com)